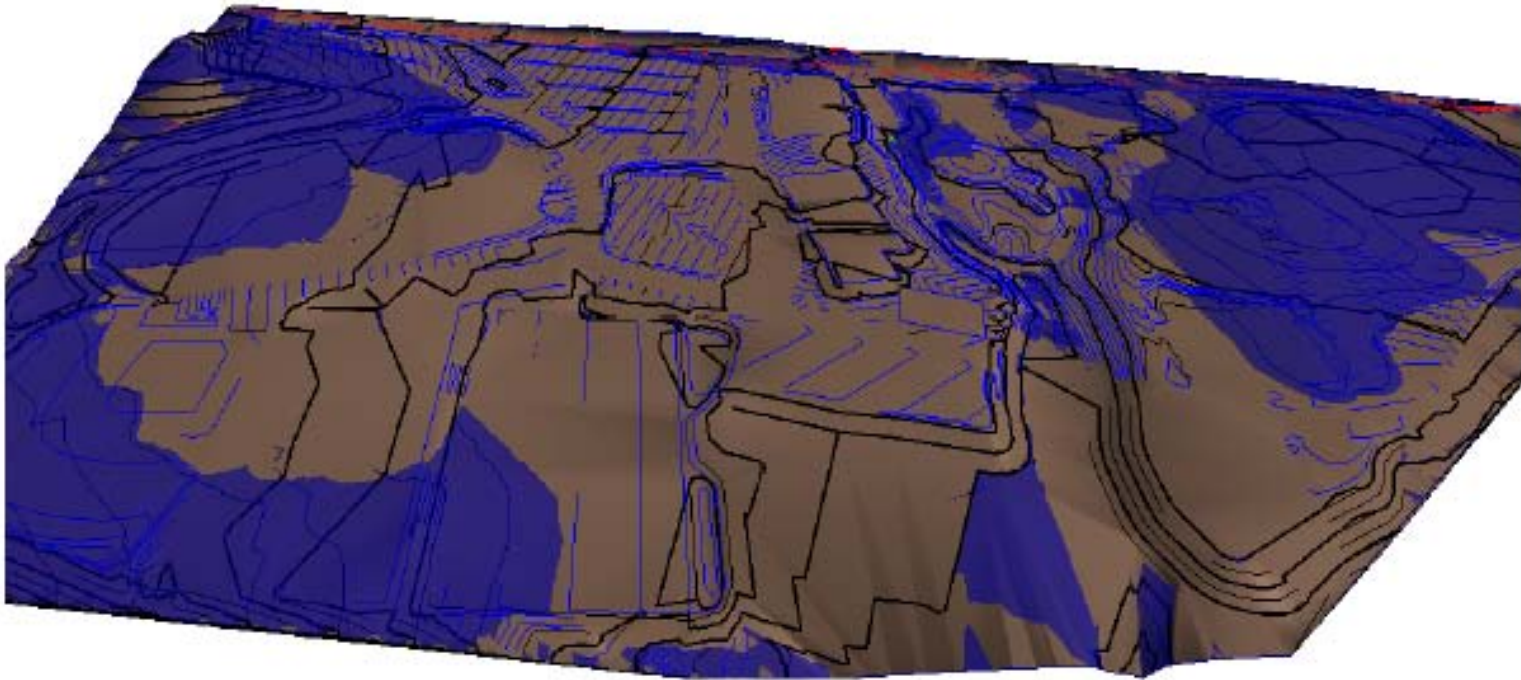


PROPOSITION H/U STATUS REPORT



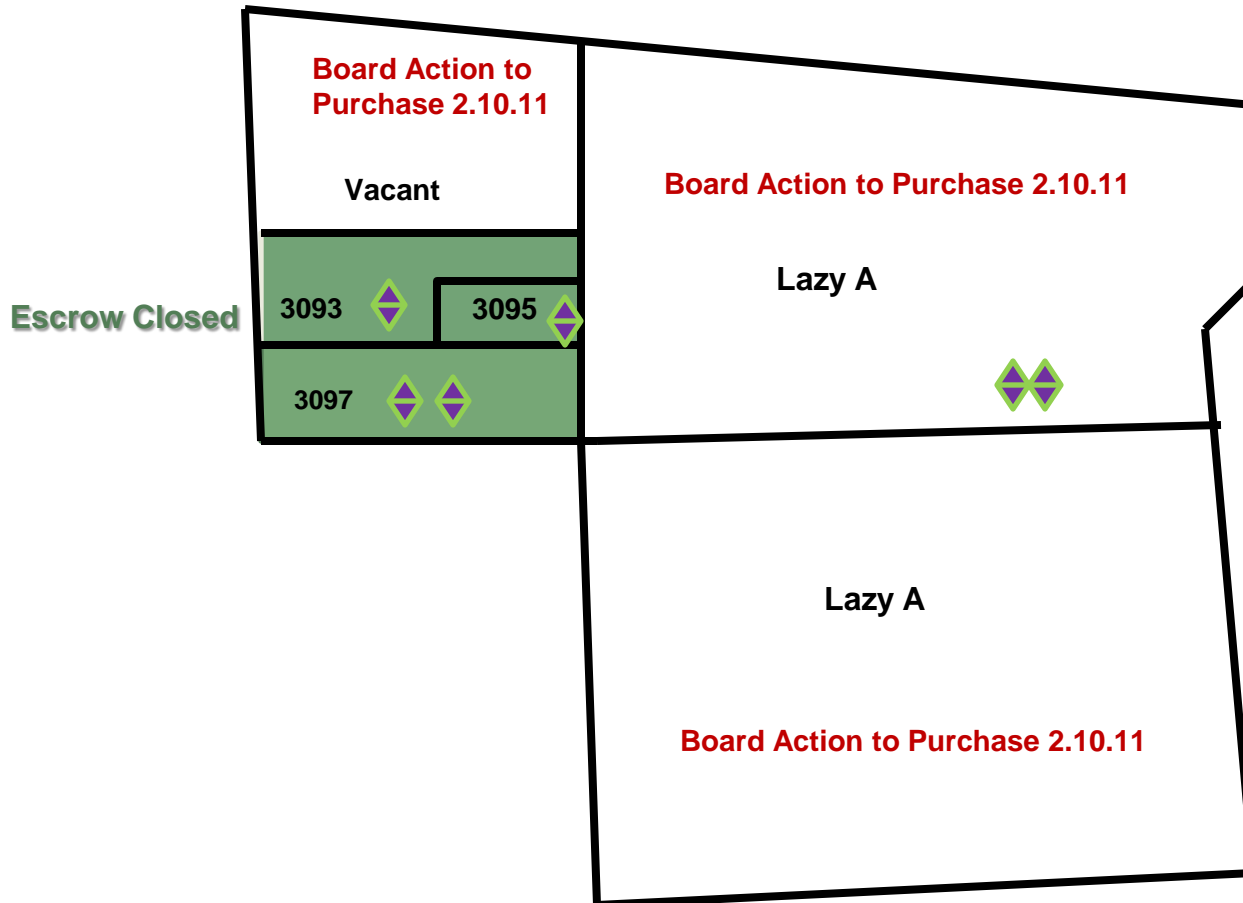
MONTHLY REPORT TO THE BOARD


Facilities Management

February 10, 2011



LAND ACQUISITION/RELOCATION



 Relocation “households”



CURRENTLY APPROVED PHASE I BUDGET

	Approved
LAND	\$25,000,000
BUILDING	<u>\$40,000,000</u>
TOTAL	\$65,000,000

Includes all costs for: on/off site grading and improvements, building construction permits, environmental, design, etc.

WILDLIFE AGENCY PERMITTING STATUS

- USACOE/Calif. Dept. Fish and Game, permitting underway
- Cultural work/monitoring ongoing
- Environmental, biology work and civil work complete

DESIGN STATUS

Grading

- Schematic design complete
- Design development underway
- Next step: authorize construction docs; submit to DSA
- Earliest grading start late 2011

Buildings – Phase I

- Schematic design complete
- Next Step: Design development phase

CONCEPTUAL PHASE I DESIGN



OFFSITE PERMIT STATUS

Roadway/Utility Plans

- Traffic, utilities (sewer, fire, water, power), fire management coordination/permitting ongoing
- Application for roadway improvements submitted to County
- Coordination with SDGE, Padre Dam, Cable/Phone, County sewer provider, traffic division is ongoing

CONSTRUCTION TEAM/CONSTRUCTABILITY



Construction Team

- Lease-Lease Back contractor approved Nov. 2010
- Erickson Hall under contract
- Grading and utility cost evaluation underway plus constructability review
- Developing BIM model for grading

CONSTRUCTION TEAM/CONSTRUCTABILITY



400,000 Cubic Yards Cut/Fill