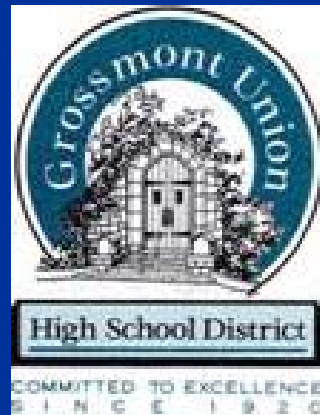


PROPOSITION H *and* BEYOND

Quality Facilities For Our Students



May 8, 2008

AGENDA

- | | |
|---|------------|
| Part 1 - Introduction and Overview | Collins |
| Part 2 – Proposition H and Beyond | Facilities |
| Part 3 – Closing Remarks | Collins |
| Part 4 - Questions & Answers | Board |

PART 1

INTRODUCTION AND OVERVIEW

A Review of Proposition H

- Passed in 2004, Proposition H funded \$274 million designed to address the modernization of school infrastructure, core classroom facilities and a new high school.
- It was the first bond passed in 37 years in East County

Proposition H

- **Implementation of Proposition H has made steady improvements including:**
 - **Strong staff & program management in place**
 - **Excellent and transparent public reporting**
 - **Third party review**
 - **Citizens' Bond Oversight Committee - improvements and annual audit**
 - **Improved San Diego Taxpayer's Association relationship**

What Prop H Accomplished

- Existing schools (work completed or underway)
 - 306 modernized classrooms
 - New Infrastructure
 - 72 new science classrooms
 - New Viking Center 6 new classrooms
 - New school site EIR
- It is important to remember that Proposition H was never envisioned to completely modernize all GUHSD campuses

Proposition H

- Because of inflation there are Proposition H projects that will not be completed.
- At the same time, there are projects that Proposition H didn't envision:
 - All Cafeterias and libraries
 - Multi-purpose facilities
 - Band and choral rooms
 - Physical education facilities
 - Student support facilities (counseling and attendance offices)

Proposition H never anticipated new strategic instructional needs

- **Development of a strong Career Technical Education program**
- **A visual and performing arts plan**
- **The expansion of alternative education and “work training” programs**

Rationale for Recommendations

- **Cost-benefit effectiveness of capital investment – property values**
- **When will this work be done? The longer we wait the more expensive it will be for taxpayers**
- **Competitiveness of our schools and District**

Rationale

- **Equity and parity for teachers, students and school staffs**
- **The need to build a dynamic Career Tech program that will significantly affect East County business**
- **Promises made and promises kept**
- **Doing what is right for the children of East County**

Additional Considerations

- Superintendent's five month engagement of the business, civic and parent community of East County
- Citizens' Bond Oversight Committee - has clearly identified the need
- Bond Advisory Committee – “Promises made, Promises kept”
- Demographic study
- Feasibility study

Recommendations

- Propose new bond under Proposition 39 for November 2008 general election.

Recommendations cont.

- New bond scope:
 - Complete the original scope of Proposition H
 - Continue the modernization of campuses striving for equity for teachers and students
 - Build a strong Career Technical Education program in all schools
 - Ensure computer systems keep pace with Technology
 - Begin to address “parity” of facilities with other San Diego County high schools

Recommendations cont.

- **Build 1st phase of new high school serving 800-1,200 students**
 - **Every community deserves quality school facilities**
 - **Commit to ensuring that all school sites meet the standards of a modern high school**
 - **Ensure all East County communities are treated fairly**

Recommendations cont.

- Maintain fiscal responsibility, considering short and long range demographics and issues of declining enrollment
- Engage the community in a school design that is reflective of the community and culture of Alpine
- Construct a high school on a small learning communities model that will accommodate the projected enrollment and then “expand” as the school population warrants.

Recommendations For Proposition H Funds Held in Reserve

- Expend now \$20 million for land and infrastructure (of the \$65M in reserve) for a new school
- School site and purchase timeframe will be determined at the conclusion of the EIR
- Release now \$45 million (of \$65M) to complete Phase 3BR efforts

PART 2

PROPOSITION H and BEYOND

Prop H Accomplishments (at completion)



- 384 new and modernized classrooms
- \$70M infrastructure upgrades for technology, water, sewer, electricity
- Over \$220M in classroom improvements
- Qualified for over \$140M in State funding

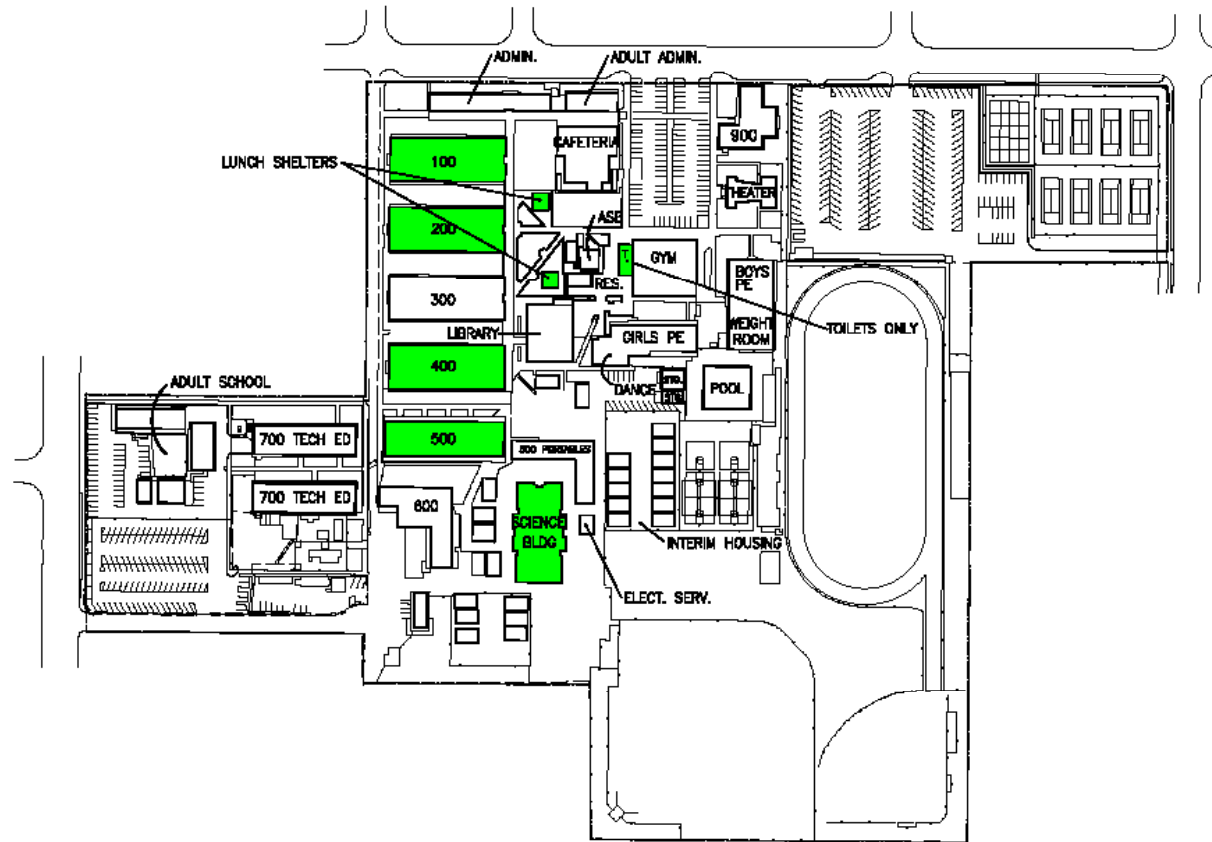
Program Summary – All Phases

Campus	Utility Upgrade	New	ADA/Site Upgrade	# Classroom Modernized	No. of Classrooms	% Compl.
Grossmont HS	●	10	●	28	84	45%
Helix CHS	●	10	●	32	80	53%
El Cajon Valley HS	●	8	●	45	93	57%
Mount Miguel HS	●	0	●	58	91	64%
El Capitan HS	●	8	●	37	76	59%
Granite Hills HS	●	8	●	33	102	40%
Monte Vista HS	●	8	●	37	76	59%
Santana HS	●	8	●	23	88	35%
Valhalla HS/Viking Ctr.	●	12/6	●	8	96/6	21%/100%
West Hills HS	●	0	●	0	0	0
Steele Canyon HS	●	0	●	0	0	0
Chaparral	●	0	●	1	10	10%
Work Training Center	●	0	●	4	4	100%
Homestead/Frontier		0		0	8	0%
Grossmont Adult	●	0	●	0	18	0%
TOTAL		78		306	832*	46%

*As currently programmed for phases 1, 2B, 3A, 3BR

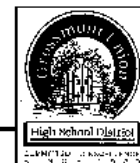
*Includes 204 portable classrooms

Proposition H Work Completed “Typical Campus”



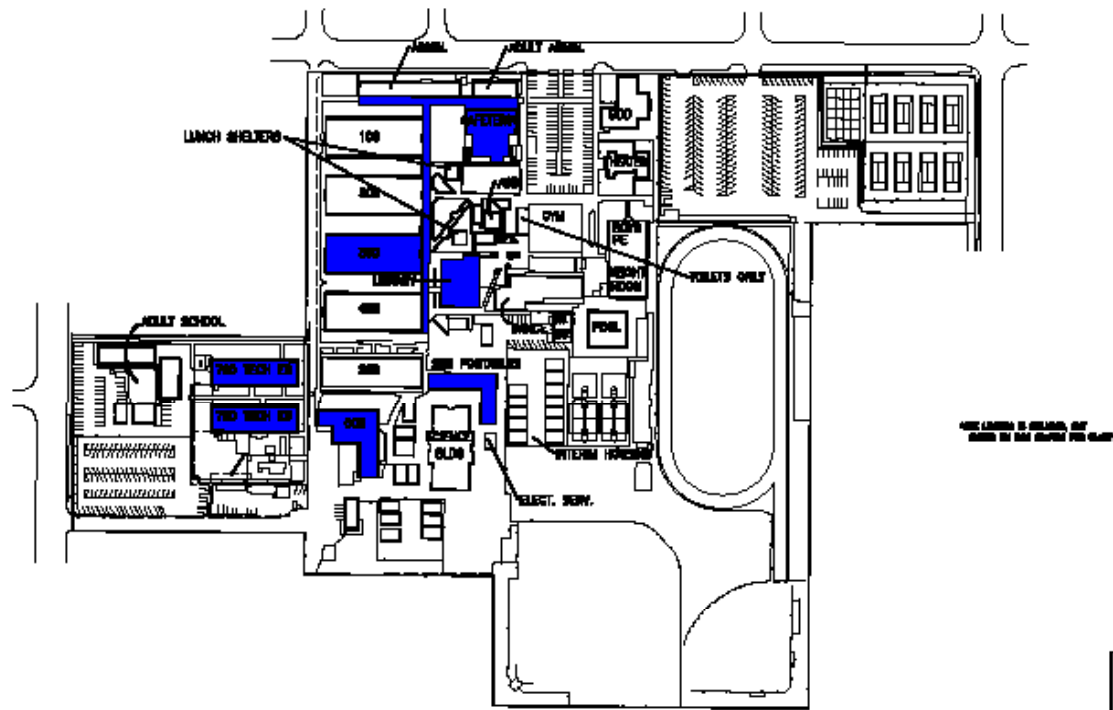
TRITTIPO EL CAJON VALLEY HIGH SCHOOL
PROP H - Completed or Planned

MAY 4, 2008



*As currently programmed for phases 1, 2B, 3A, 3BR

Proposition H Work Not Completed “Typical Campus”



TRITPO EL CAJON VALLEY HIGH SCHOOL
PROP H - WORK REMAINING

MAY 6, 2010



*As currently programmed for phases 1, 2B, 3A, 3BR

Bond Work Not Completed

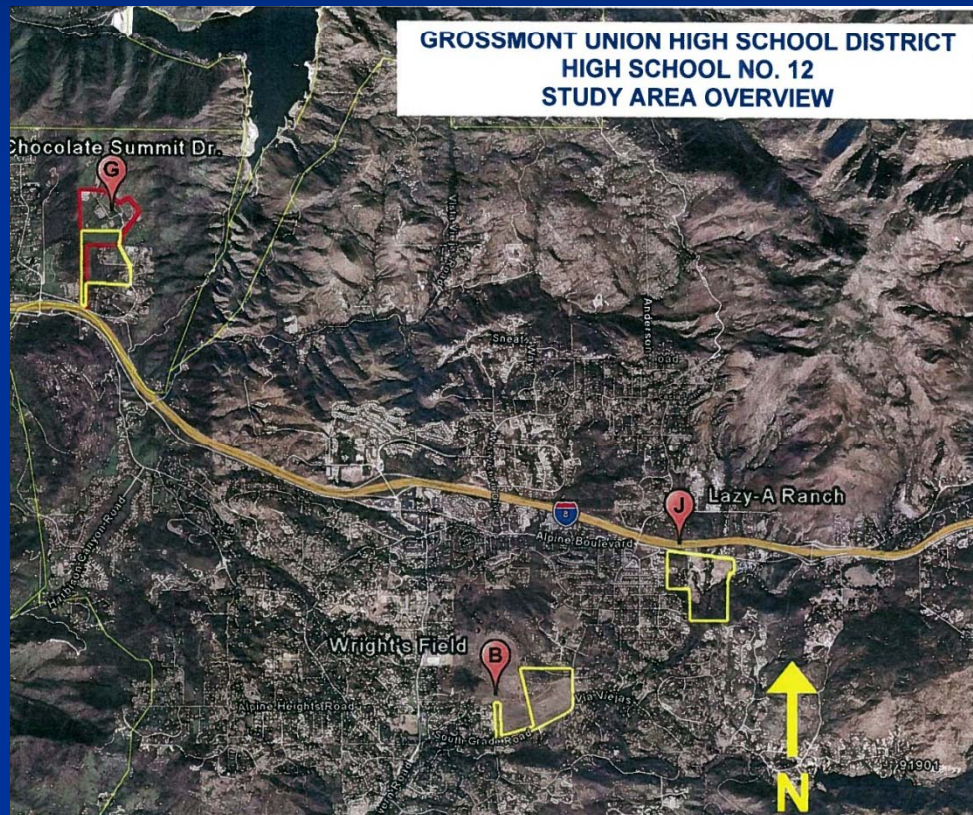
Campus	Building or Area
Grossmont HS	200, 300, cafeteria, new classroom
Helix CHS	400, 500, 1200, 1300
El Cajon Valley HS	300, 600, 700, cafeteria, library, aging relocatables, covered walkways, site lighting
Mount Miguel HS	400S, 500, 600, 700, cafeteria, drop-off/parking
El Capitan HS	500/library, 1100, 1200, covered walkways, aging relocatables
Granite Hills HS	160, library, multi-purpose, food service, aging relocatables
Monte Vista HS	200, 500, 600, 700, library, cafeteria, drop-off
Santana HS	200, library, 500, 600, 700, 800
Valhalla HS/Viking Ctr.	100, 200, 300 and 400 level, interior lights, windows
West Hills HS	
Steele Canyon HS	HVAC for communications, PE facilities
Chaparral	ADA and restroom upgrades, aging relocatables
Work Training Center	Exterior upgrades
Homestead/Frontier	
Grossmont Adult	

*As currently programmed for phases 1, 2B, 3A, 3BR

New High School Planning

- **Environmental work underway now**
 - **Habitat studies ongoing**
 - **Vegetation studies ongoing**
 - **Traffic study ongoing**
- **Environmental Impact Report 1st Qtr. 2009**
- **Initiate land purchase 1st Qtr. 2009**
- **Design efforts 2009/10**
- **Division of State Architect through 2010**
- **Earliest construction start 2011**

\$20M For New High School



- Site studies and selection
- Buy land
- Rough grade site
- Utilities to site perimeter
- Mitigation measures

New High School Schedule

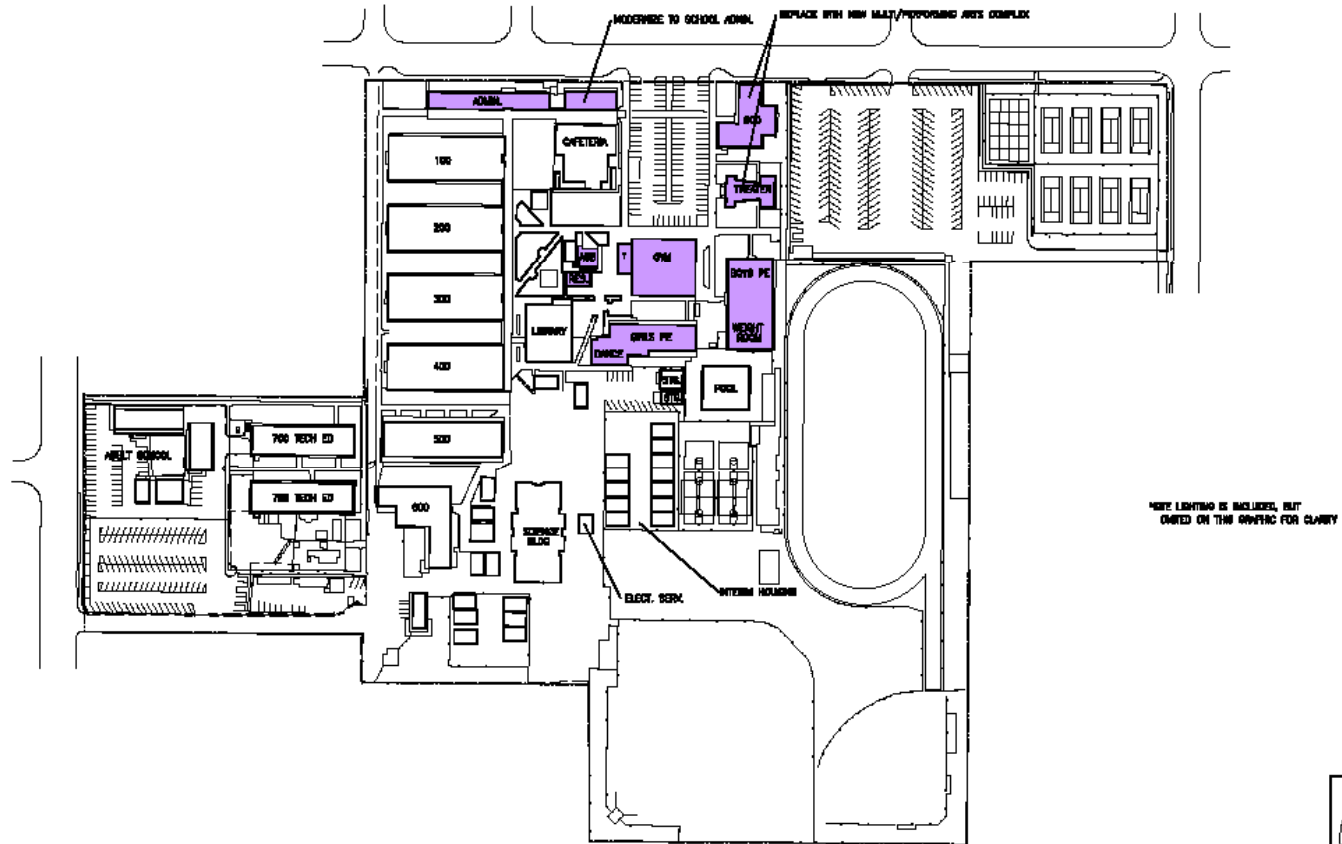
	2008				2009				2010				2011				2012			
	Q1	Q2	Q3	Q4	Q1	Q2	Q3	Q4	Q1	Q2	Q3	Q4	Q1	Q2	Q3	Q4	Q1	Q2	Q3	Q4
EIR	■	■	■	■	■															
Land Purchase						■	■	■	■	■										
Design						■	■	■	■	■										
Construction											■	■	■	■	■	■	■	■		
Opening																			■	

With Reallocation of \$45M

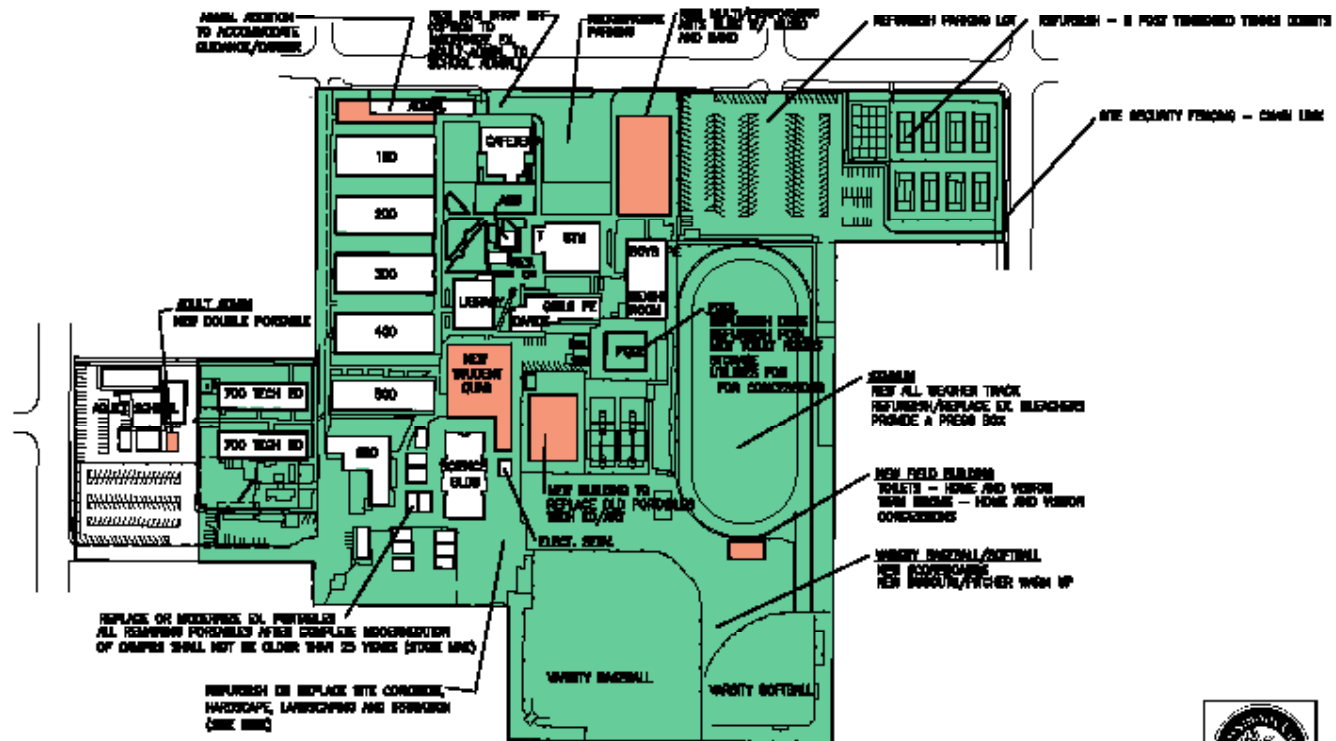
150 Additional Classrooms Modernized

Campus	Building or Area
Grossmont HS	<u>200, 300</u> , cafeteria, new classroom
Helix CHS	<u>400, 500</u> , 1200, 1300
El Cajon Valley HS	<u>300, 600</u> , 700, cafeteria, library, aging relocatables, covered walkways, site lighting
Mount Miguel HS	400S, <u>500, 600, 700, cafeteria</u> , drop-off/parking
El Capitan HS	500/library, <u>1100, 1200</u> , covered walkways, aging relocatables, <u>site lighting</u>
Granite Hills HS	<u>160</u> , library, multi-purpose, food service, aging relocatables, <u>site lighting</u>
Monte Vista HS	<u>200</u> , 500, 600, 700, library, cafeteria, drop-off
Santana HS	<u>200, library</u> , 500, 600, 700, <u>800</u>
Valhalla HS/Viking Ctr.	<u>100, 200</u> , 300 and 400 level, interior lights, <u>windows</u>
West Hills HS	
Steele Canyon HS	<u>HVAC for communications, PE facilities</u>
Chaparral	<u>ADA and restroom upgrades</u> , aging relocatables
Work Training Center	Exterior upgrades
Homestead/Frontier	
Grossmont Adult	

Campus Needs Not In Prop H “Typical Campus”



Beyond Prop H - Addressing Parity “Typical Campus”



TRITPO EL CAJON VALLEY HIGH SCHOOL
Future Needs/Parity



MAY 18, 2008

Facility Master Plan (Revision I)

- June 2008 report to the Board of Trustees
- Builds upon 2003 Plan
- Will quantify the cost of parity



vs.



PART 3

CLOSING REMARKS

Career Technical Education



- A new bond would make possible a modern Career Tech Education program across East County

Modern Classrooms District-wide

- A new bond would make it possible for all students to learn in a modern, high-tech and air conditioned classroom



Equity In Learning Environments



- A new bond would provide for equity of teaching environment for students and teachers

Equity In Facilities



Improve Safety and Access

- A new bond would permit us to repair and address safety concerns not in Proposition H



Beyond Proposition H



- A new bond would permit us to continue to repair and modernize facilities never envisioned in Proposition H

Vision For The Future

- I'm not making recommendations based on today's economy or a projected decline in enrollment over the next few years
- I'm making these recommendations based on a larger vision for our future – to ensure that students in East County will be educated in quality facilities for the next 50 years

PART 4

QUESTIONS & ANSWERS